



Family

presented by **WOY**^{THE}



950.000 € VAT exempted

C.D. Holmes - Clovelly Class - 23.90 m - 1969

Family

Dive into the story of M/Y Family, a maritime vessel with a rich history. Part of a series of 64 Fleet Tenders commissioned by the British Royal Navy between 1963 and 1982, she was built in 1969 by C.D. Holmes on River Hull, UK. Designed for North Seas operations, she could carry 100 passengers or 25 tons of cargo. Originally a service vessel, she has been converted into a family yacht that emphasizes both comfort and practicality. Known for her maritime exploration capabilities & fuel efficiency, M/Y Family represents a balance between durability and environmental consideration.

Following interior improvements, the yacht now offers a welcoming ambiance for passengers of all ages. Her outdoor spaces provide tranquil retreats with captivating ocean views. Fully operational and adaptable, M/Y Family is suited for immediate exploration or ambitious restoration projects, showcasing both versatility and innovation.

*Explore the legacy & potential of M/Y Family,
a testament to maritime prowess & adaptability.*



C.D. Holmes - Clovelly Class - 23.90 m - 1969

Family

Technical highlights

Main characteristics

NAME	FAMILY
TYPE	Exploration Motor Yacht
YEAR	1969
REFIT	2017
FLAG	Netherlands
LOA	23.90 m (78'5" ft)
BEAM	6.80 m (22'4" ft)
DISPLACEMENT	approx. 160 tons
HULL MATERIAL	Steel
HULL COLOR	Black & White
HULL CONFIGURATION	Monohull
BUILDER	C. D. Holmes
MODEL	Clovelly Class Tender Fleet
COMMISSIONED BY	British Royal Navy
CLASS	100A1 (Lloyds)
STATEROOMS	4 + 1
SLEEPS	8 + 2

C.D. Holmes - Clovelly Class - 23.90 m - 1969

Family

Capacities

SPEED	Cruising	7 Knots @ 480 RPM
	Top	9 Knots @ 700 RPM
FUEL CONSUPTION	@ Cruising Speed	21L per hour
	@ Top Speed	45L per hour
FUEL CAPACITY	3x 6.000 litres	18.000 litres
	+ daily service tank	650 litres
FRESH WATER CAPACITY	3.700 litres stored	200L per hour from dessal
GREY/BLACK WATERS CAPACITY	2x 1.500 liters	total 3.000 liters

Engines

ENGINES	1x Lister Blackstone	approx. 650 hours
	330 HP - fully overhauled in 2018	08/2023
FUEL TYPE	Diesel	

C.D. Holmes - Clovelly Class - 23.90 m - 1969

Family

Description

Introduction

M/Y Family, part of a series of sixty-four Fleet Tenders commissioned by the British Royal Navy from 1963 to 1982, boasts a keel laid by C.D. Holmes in 1969 at Alexandra Dock, on River Hull, in the UK. Originally constructed to Lloyd's 100A1+ UK Coasting Service standards, these vessels were designed for North Seas operations. These vessels were featuring various deckhouse designs but concealed identical hulls and machinery, capable of accommodating 100 passengers or over 25 tons of cargo. Evolving from a service vessel, she has transformed into a versatile family yacht, offering comfort and renewed energy. Her robust build ensures safety and smooth sailing through diverse conditions, appealing to families seeking secure waterborne adventures. Renowned for her maritime exploration capabilities and impressive fuel efficiency, M/Y Family unites resilience with environmental consideration. Following conversion, her interior has been thoughtfully enhanced for passengers of all ages, exuding an inviting ambiance. Her skillful integration of outdoor spaces provides serene retreats against captivating seascapes. M/Y Family, fully operational and adaptable, is poised for both immediate exploration and/or ambitious restoration projects, embodying flexibility and innovation.

History

As mentioned before, M/Y Family was one of sixty-four Fleet Tenders commissioned by the British Royal Navy from 1963 to 1982. Her keel was laid in 1969 by C.D. Holmes, a renowned commercial shipyard based in Alexandra Dock, upon River Hull, in the United Kingdom.

Notably, M/Y Family was originally built to Lloyd's 100A1+ UK Coasting Service classification. These well-constructed vessels were designed for operations in the North Seas around the UK, the Continent, and the English Channel. While there were four different deckhouse configurations, their hulls and machinery remained identical. This design allowed for the accommodation of 100 passengers or more than 25 tons of cargo across two holds and on deck.

C.D. Holmes - Clovelly Class - 23.90 m - 1969

Family

Legacy

The "Clovelly Class" was a series of fishing trawlers constructed by the C.D. Holmes shipyard in Hull, England. These trawlers were specifically designed for the fishing industry, intended for fish capture, particularly through the practice of trawling. The name "Clovelly Class" was a nod to the English fishing village of Clovelly.

These trawlers were carefully crafted with features tailored to meet the demands of commercial fishing. Equipped with trawl nets, extensive fishing nets dragged along the seabed to capture fish, the vessels of the "Clovelly Class" resulted from meticulous design that took into account the nuances of fishing techniques and the challenging maritime environment.

What further sets this trawler class apart is their robustness and capability to navigate through demanding waters. Their sturdy construction, emphasizing durability and resistance to the elements, made them renowned vessels capable of tackling the sometimes harsh marine conditions. Due to their ability to withstand the challenges of the sea, these trawlers captured the attention of the Royal Navy for their potential as support vessels.

The Royal Navy recognized the exceptional seafaring qualities of the "Clovelly Class," along with their generous cargo capacity, making them ideal candidates for sea-based support roles. These trawlers were adapted for specific missions within the context of the Royal Navy, showcasing their versatility and adaptability to roles beyond their original design intent.

Through their robustness and cargo capacity, the vessels of the "Clovelly Class" earned their place as support vessels within the Royal Navy, a testament to their quality and reputation beyond their initial role in the fishing industry.

C.D. Holmes - Clovelly Class - 23.90 m - 1969

Family

A proper conversion

Emerging from her origins as a service vessel, M/Y Family has undergone a notable transformation into a versatile family yacht. This evolution has infused renewed vitality into the vessel, positioning her as a source of comfort and enjoyment for all on board. Her sturdy construction ensures safety and a steady passage through various maritime conditions, making her a suitable choice for families seeking secure adventures on the water.

M/Y Family has earned her reputation as a maritime explorer with a noteworthy range, allowing her to navigate diverse destinations with commendable fuel efficiency. This distinct blend of resilience and thriftiness makes each voyage an expedition of discovery without compromising environmental sensibilities.

Following her conversion, meticulous attention has been dedicated to enhancing the yacht's interior, creating a welcoming sanctuary for passengers of all ages. The fusion of comfort and functionality effortlessly creates an atmosphere that emanates warmth and relaxation. Moreover, M/Y Family has ingeniously incorporated expansive outdoor areas, carefully crafted to provide tranquil retreats where passengers can unwind amid captivating seascapes.

Presenting herself as a vessel with multifaceted potential, M/Y Family stands poised to embark in her current state – fully operational and eager to embrace new horizons. Alternatively, she possesses the capacity to serve as an exquisite project foundation for those with ambitions of personalization and restoration. The yacht's adaptable nature underscores her flexibility, accommodating the aspirations of those in search of immediate exploration or those ready to embark on a journey of rejuvenation and innovation.

C.D. Holmes - Clovelly Class - 23.90 m - 1969

Family

Full specifications

General information

- **Type:** Fleet Tender, Clovelly Class
- **Original Class:** 100A1 (Lloyds)
- **Year of Build:** 1969
- **Ship Builder:** C.D. Holmes, Kingston Upon Hull
- **Ordered by:** British Royal Navy

Tracing ownership & name changes

- **1969 - 1985:** Once known as "Denmead," this yacht proudly served in the military's Clovelly Class tender fleet.
- **1986 - 2005:** Renamed "Kilquade," she supported maritime operations with unwavering dedication.
- **2006 - 2017:** As "St. Katharine," she embraced a new role, welcoming visitors in bustling Barcelona.
- **2017 - 2023:** Today, named "Family," she's ready to go for new adventures.

A Journey of Transformation

Each name reflects a different part of "Family's" story – military service, versatile support, and urban hospitality. Now, she's ready to be a part of your new memories by the blue waters.

General technical information

- | | |
|---|---|
| <ul style="list-style-type: none"> • Dimensions: <ul style="list-style-type: none"> ◦ Length 23.99 meters (~ 78.20 ft) ◦ Beam 6.80 meters (~ 22.47 ft) ◦ Draft 2.50 meters (~ 8.20 ft) • Displacement: Approximately 160 tons | <ul style="list-style-type: none"> • Tanks <ul style="list-style-type: none"> ◦ Fuel Tanks: 3 x 6000 liters ◦ Fuel Daily Service Tank: 1 x 650 liters ◦ Fresh Water: 1 x 3700 liters ◦ Grey/Black Water Tanks: 2 x 1500L
total approx. 3000 liters |
|---|---|

C.D. Holmes - Clovelly Class - 23.90 m - 1969

Family

Main engine

- **Type:** 4-cylinder Lister Blackstone ERS4
- **Performances:** 750 RPM - 330 HP (243 KW)
- **Refit:** fully overhauled in 2018 - Approx. 600 hours registered since
- **Turbo:** Napier
- **Gear Box:** Lister Blackstone 2:1

Consumption & speed

- **Cruising (7 knots):** 480 RPM @ 21 liters per hour
- **Maximum Speed (9 knots):** 700 RPM @ 45 liters per hour

Navigation & wheelhouse

- Furuno Radar type 1931 with a range of 46 miles
- Raymarine Color Radar-Plotter C90 with digital scanner
- VHF Sailor RT 2048, VHF Icom M4010,
- Icom DSC Controller DS 100
- MLR DGPS receiver + plotter,
- Raymarine Smart Autopilot with GPS and Plotter
- Navico NAIS 300 (AIS system),
- Furuno color echo sounder FCW 6001
- Navtex Nav5 GMDSS weather fax receiver
- Shipmate RS 6100 weather fax receiver
- Kenwood R-2000 SSB communication receiver,
- Liquid compass (original Royal Navy)
- Navigation lights 24V, AIS NSR, GPS FURUNO

C.D. Holmes - Clovelly Class - 23.90 m - 1969

Family

Safety equipment

- SART type McMurdo 9Ghz,
- EPIRB type MCM406A - 406MHz
- 1 x Pains Wessex/MOB smoke-lights,
- 16 x Lifejackets with light
- 8 x safe buoy with line,
- 2 x 6 persons dinghy in container
- 16 x foam fire extinguisher, Number of hand flares

Engine room & systems

- Workbench + tools,
- Battery charger/Inverter Mastervolt 24V-80 amp/230V
- Battery charger Mastervolt 24V-50 amp/230V,
- Battery charger 12V Super Charger
- Generator Onan silent pack 230V/400V output 27 KVA (6700 Hours – 08/2023)
- Generator Onan silent pack 230V/400V output 19 KVA (2000 Hours – 08/2023)
- Firefight pump with deck wash connection (400V)
- Bilge pump driven by the main engine
- Speck 24VDC freshwater pump 1200 liters per hour
- GDO 230V freshwater pump 3000 liters per hour
- Fuel pump to daily service tank 400V
- 2 Black water pumps with pulverizer 400V
- 1x ACV stainless steel 200-liter boiler, heated by central heating or electric boiler
- 1x 85-liter electric boiler or through the ACV boiler
- WEBASTO Airco-unit with 2 compressors, Holland Heating (central heating system) 28Kw
- Idromar desalinizer (200 l/h)

C.D. Holmes - Clovelly Class - 23.90 m - 1969

Family

Laundry & galley

- Bosch Condense dryer 7 KG, Bosch Washing machine 7 KG
- Miele fridge with freeze compartment (table size)
- Brema ice cube maker,
- Bed linen, towels, beach towels etc. circa 2x 8 pers.
- Bosch dish washer 230V, Bosch fridge 230 liters + freeze compartment 60 liters 230V
- Ceramic cooking plate with 2 single units and 2 double units 230V
- Whirlpool electric (hot air) oven + grill 230V, Whirlpool microwave + electric oven 230V
- Stainless steel sink with shower tap,
- Candy stainless steel hood 230V
- Indirect light under the cupboards 230V
- Plates, cups, glasses, cutlery, pots & pans for 10

Deck equipment

- Anchor winch with 400V electro motor approx. 120 meters Stud link chain
- Stainless steel swim ladder,
- Loose large sofas & numerous beanbags,
- Bow-facing spot with integrated bar stools
- Wooden dining set for 8



C.D. Holmes - Clovelly Class - 23.90 m - 1969

Family

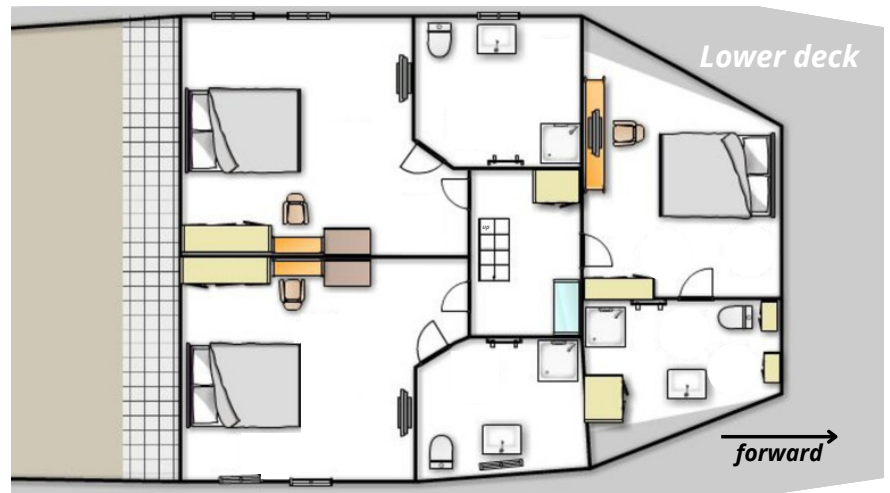
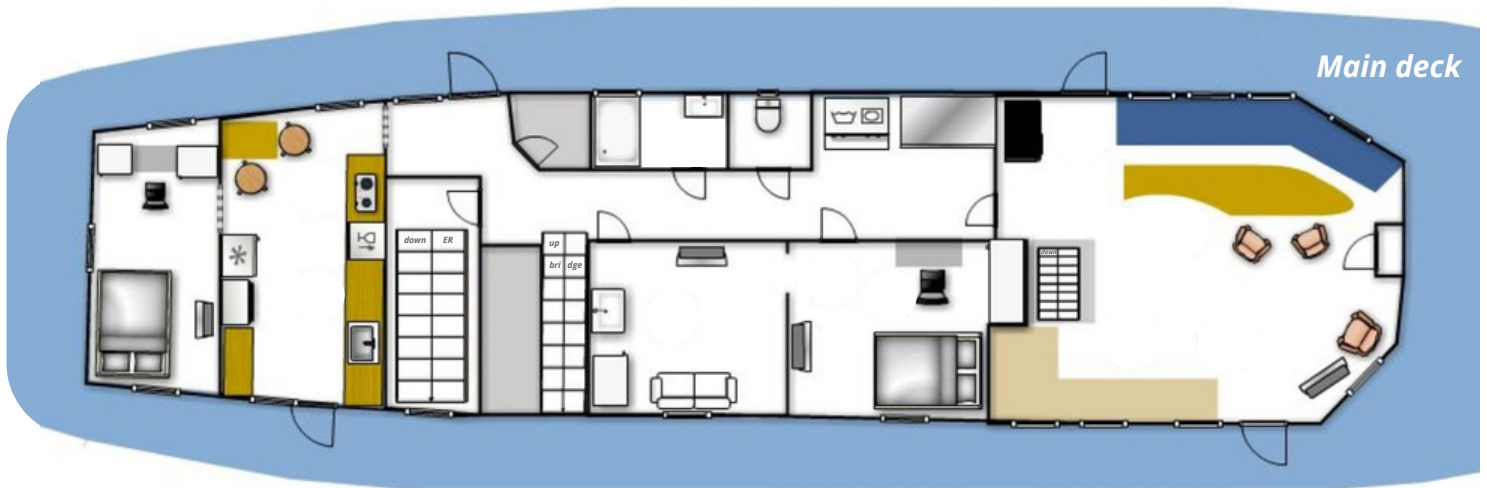
Disclaimer

The information provided in this sale document for M/Y Family, including all speeds, measurements, capacities, and consumptions, is intended as approximate or estimated and is subject to potential errors or omissions. Specifications are provided for informational purposes only. Data was obtained from sources believed to be reliable but is not guaranteed by the owner or brokers. Buyers are responsible for verifying the accuracy of all data contained herein and instructing their agent and surveyors to confirm details for accuracy before purchase. The vessel is sold "as is," with no warranties regarding condition, performance, or future capabilities. The stated price, terms, and availability of M/Y Family may change without notice and are subject to prior sale or withdrawal from the market. The seller and associated parties are not liable for any damages or claims arising from the purchase, ownership, or operation of the vessel. Buyers are responsible for legal and regulatory compliance and are advised to seek professional advice as necessary.

C.D. Holmes - Clovelly Class - 23.90 m - 1969

Family

Layout



C.D. Holmes - Clovelly Class - 23.90 m - 1969

Family

Gallery

LAUNCH of the Lady Cecilia, the first vessel completed after CD Holmes took over the shipyard
(Photo courtesy of Bobby Bateman)



C.D. Holmes - Clovelly Class - 23.90 m - 1969

Family



C.D. Holmes - Clovelly Class - 23.90 m - 1969

Family



C.D. Holmes - Clovelly Class - 23.90 m - 1969

Family



C.D. Holmes - Clovelly Class - 23.90 m - 1969

Family



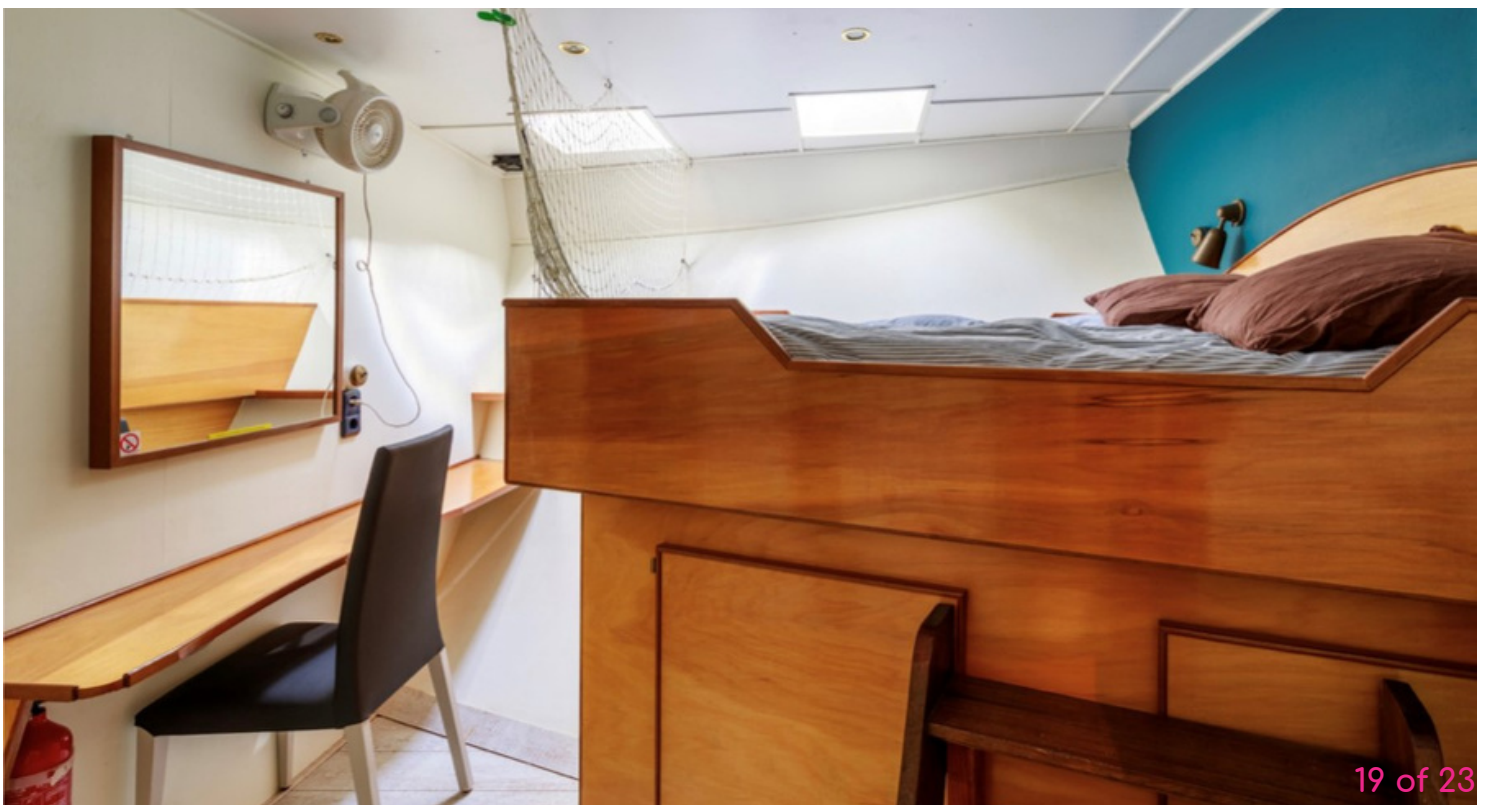
C.D. Holmes - Clovelly Class - 23.90 m - 1969

Family



C.D. Holmes - Clovelly Class - 23.90 m - 1969

Family



C.D. Holmes - Clovelly Class - 23.90 m - 1969

Family



C.D. Holmes - Clovelly Class - 23.90 m - 1969

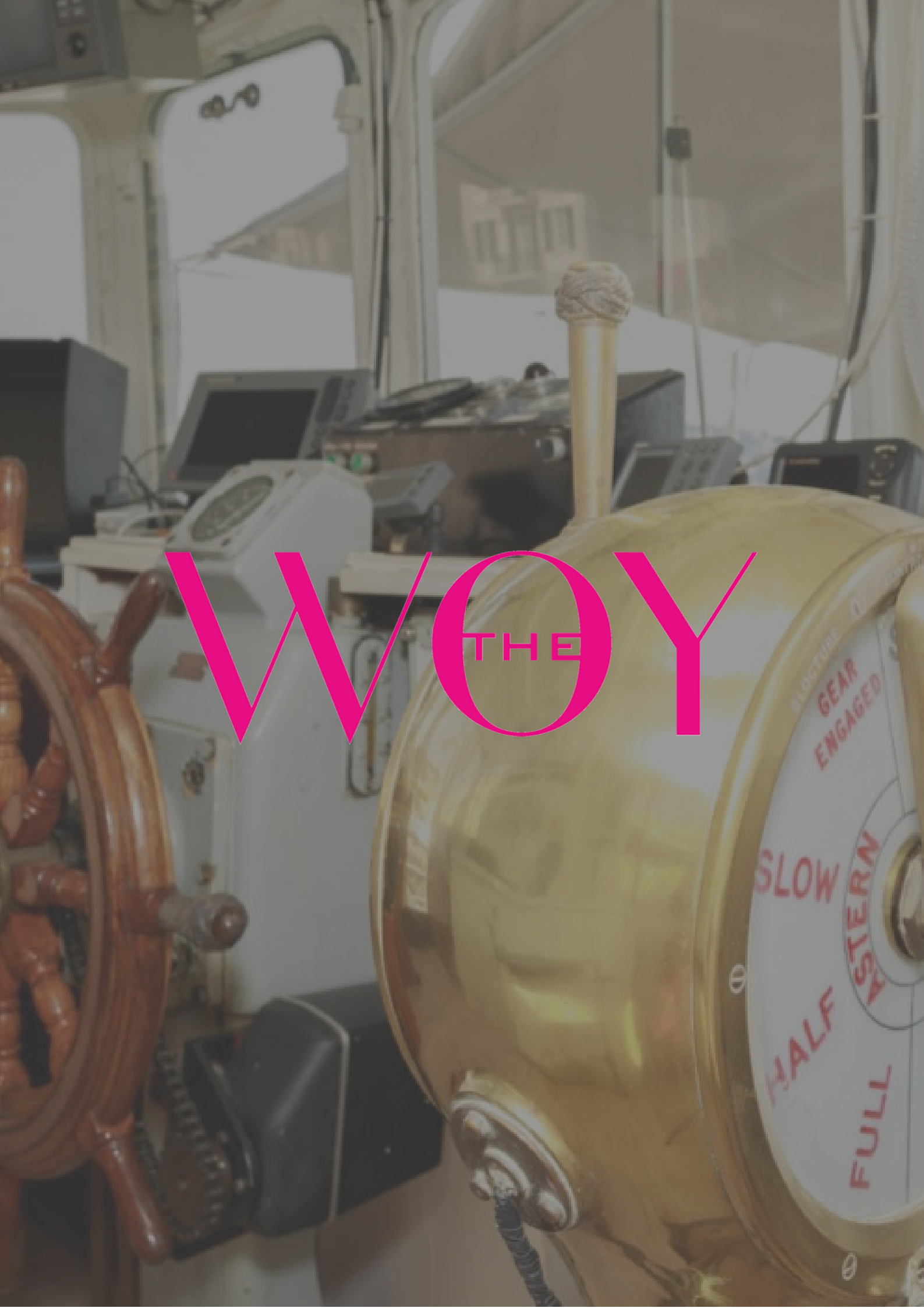
Family



C.D. Holmes - Clovelly Class - 23.90 m - 1969

Family





WVOY

THE